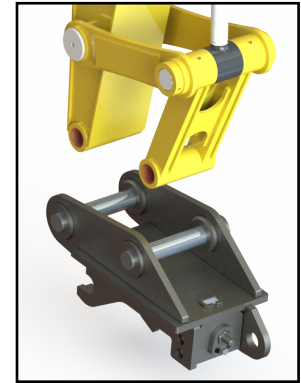




A DIVISION OF LIFCO

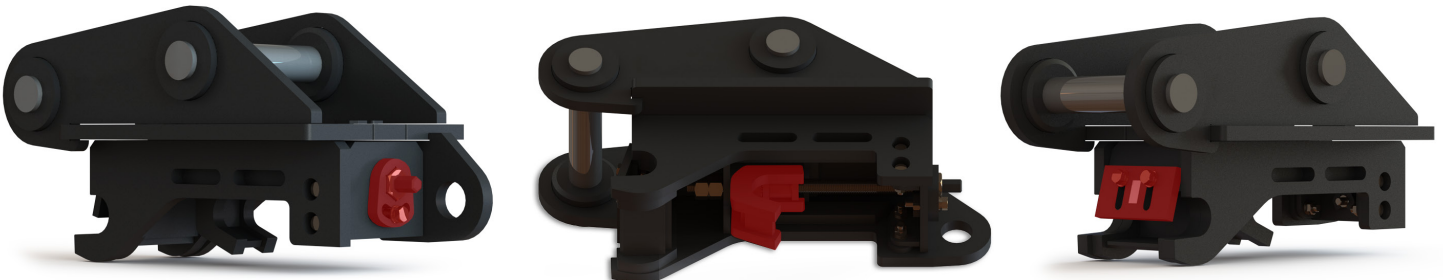
HOW TO INSTALL YOUR NEW MULTI-GRAB COUPLER

- 1** Inspect the Multi-Grab Coupler and accessories upon delivery. Check the packaging for any damage which might have occurred during shipment. Ensure all components have been delivered. If anything appears to be damaged, missing or incorrect, contact TRK before continuing with the installation.
- 2** Thoroughly clean pin bores and boss faces on the machine before installation.
- 3** Unfasten the retaining hardware and remove the pins that came pre-installed in the Multi-Grab Coupler. These pins will be used later, either to pin the coupler to the machine, or used with an existing attachment, depending on your order.
- 4** Place the Multi-Grab Coupler on the ground oriented as shown in the image to the right.
- 5** Lower the arm in between the lugs and align the pin bores of the stick and link with the corresponding bores on the Coupler.
- 6** Apply grease to the pin bores of the coupler before pinning the coupler to the machine.
- 7** Secure the pins using the retaining hardware included with your Multi-Grab Coupler.
- 8** Ensure that the Multi-Grab Coupler is the correct fit by fully curling and crowding bucket linkage slowly, watching for interference or resistance. If there are any signs that the Multi-Grab Coupler is not operating smoothly, contact TRK. Do not attempt any modifications to either the Multi-Grab Coupler or the machine.



HOW TO OPERATE YOUR NEW MULTI-GRAB COUPLER

Using a 1/2" drive ratchet, adjust the mover grabber jaw to make a tight fit. Secure rear auxlock before operation.



WARNING

DO NOT USE IMPACT WRENCH. REQUIRES A 1/2" DRIVE RATCHET.
RECOMMENDED TORQUE: 150 FT/LBS. DO NOT EXCEED: 200 FT/LBS.